

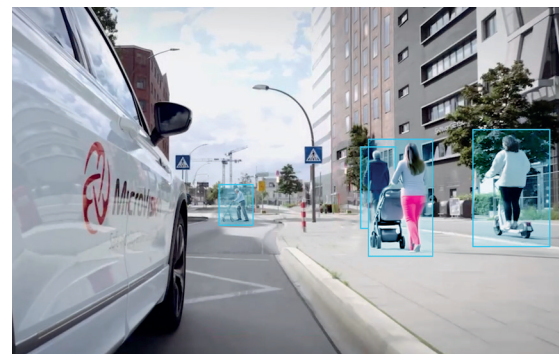
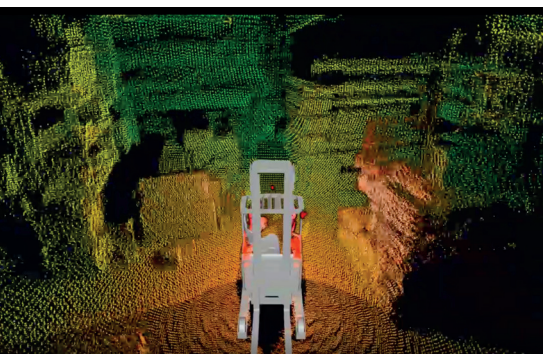
# MOVIA™ S

180° solid-state lidar performance in a cost-effective and compact design for the most demanding near-field applications



## Key Features

- ▶ Highly cost-effective, scalable near-range solution
- ▶ Ideal for near-field applications such as parking, blind spot detection, and low-speed autonomy
- ▶ Ultra-compact housing: seamless integration into design-critical components such as fenders
- ▶ Pure solid-state: no moving parts
- ▶ Low power consumption
- ▶ Onboard processing capability and optional perception software
- ▶ Developed to automotive-grade standards



Safe mobility at the speed of life®





## Technical Data

Technology / Laser / Optical		MOVIA™ S
Field of view (h x v)*		180° x 132°
Angular resolution (h x v)		down to 0.70° x 0.45°
Range	25% target @ 5 kLUX	32 m (90% true positive rate)
	10% target @ 100 kLUX	12.5 m (90% true positive rate)
Measurement range		50 m
Frame rate		up to 20 Hz
Data points per second (with 3 echos)		~ 1.5 Mio
Dimensions		77 x 76 x 52 mm
Weight		< 350 g
Power Consumption		< 7 W
Connectivity		1000BASE-TX ethernet / 1000BASE-T1 automotive ethernet

\*Other fields of view upon request possible

## Technology & Innovation



180° Field of View



Pure solid-state: No moving parts



Highly cost-effective



Low power consumption



Compact design



Class 1 laser product



High resolution



Harsh Environmental Protection: IP6K9K