

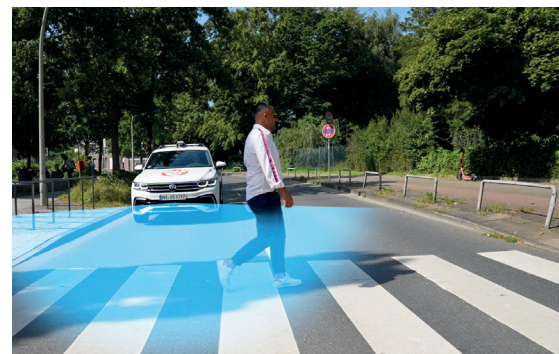
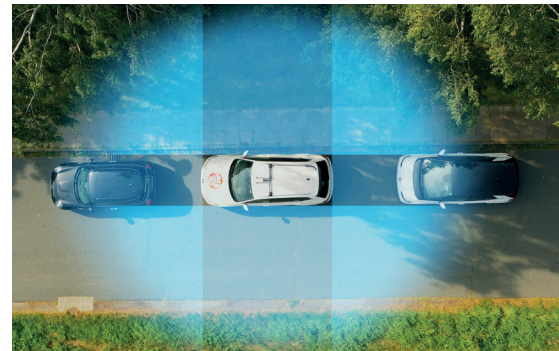
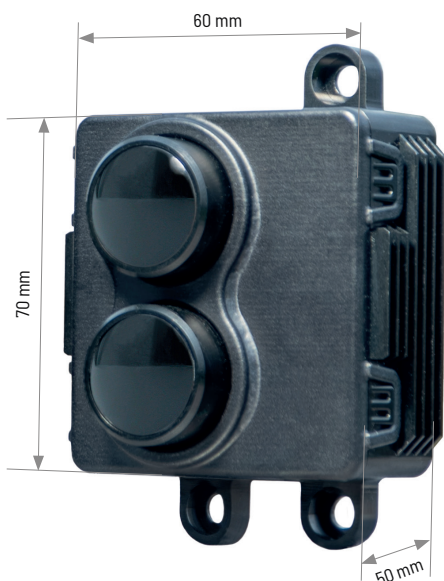
MOVIA™ S

180° lidar performance in a compact and lightweight design for the most demanding short-range applications



Key Features

- ▶ 180° field of view and small housing
- ▶ Developed to automotive-grade standards
- ▶ Pure solid-state: no moving parts
- ▶ Transceiver resolution of 256 columns x 192 rows
- ▶ Sequential flash scanning captures environment thousands of times per frame
- ▶ Adverse weather performance due to multi-echo capability
- ▶ Easy integration into design-critical components such as bumpers thanks to small optical window
- ▶ Multi feature signal processing

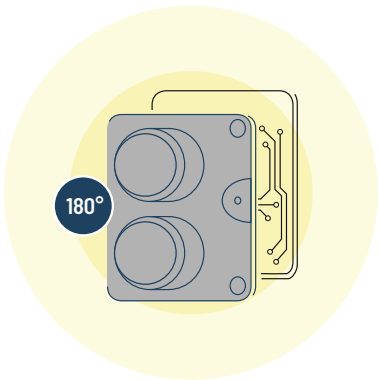


Safe mobility at the speed of life®

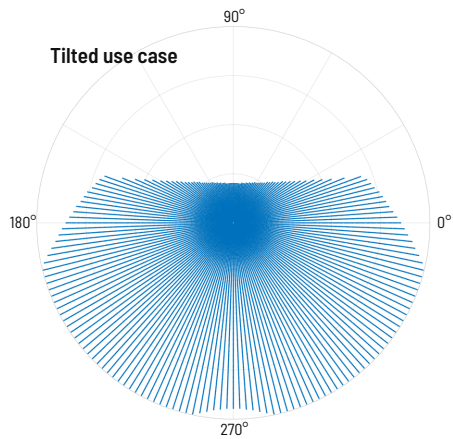
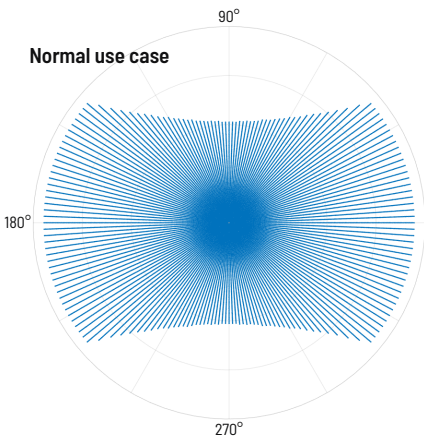


Field of View

MOVIA™ S features a 180 degree optic, allowing a very wide field of view to advance autonomous driving in urban scenarios.



Depending on the use case, MOVIA™ S allows to tilt the vertical field of view in the range of $\pm 22^\circ$ without changing the tilt of the sensor.



Technical Data

Technology / Laser / Optical	MOVIA™ S
Max. field of view (h x v)	180° x 135°
Angular resolution (h x v)	0.7° x 0.7°
Frame rate	15 Hz
Unambiguous range	50 m

Technology & Innovation



180° Field of View



No moving parts



4D Output:
Point cloud & intensity image



High resolution



Protected from environmental
influences



Class 1 laser product



Low power consumption



Compact design