

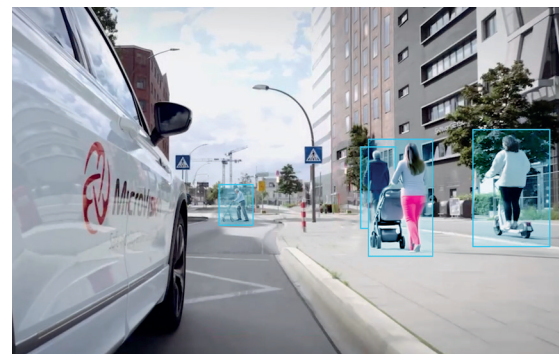
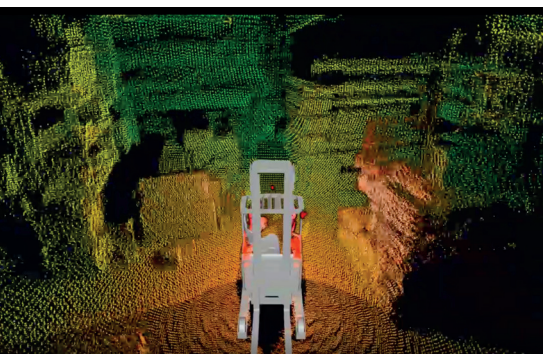
# MOVIA™ S

180° solid-state lidar performance in a cost-effective and compact design for the most demanding near-field applications



## Key Features

- ▶ Highly cost-effective, scalable near-range solution
- ▶ Ideal for near-field applications such as parking, blind spot detection, and low-speed autonomy
- ▶ Ultra-compact housing: seamless integration into design-critical components such as fenders
- ▶ Pure solid-state: no moving parts
- ▶ Low power consumption
- ▶ Onboard processing capability and optional perception software
- ▶ Developed to automotive-grade standards



Safe mobility at the speed of life®





## Technical Data

Technology / Laser / Optical	MOVIA™ S
Field of view (h x v)*	180° x 132°
Angular resolution (h x v)	down to 0.70° x 0.45°
Range	5% target @ 5 kLUX
	10% target @ 100 kLUX
Measurement range	50 m
Frame rate	up to 20 Hz
Data points per second (with 3 echos)	~ 1.5 Mio
Dimensions	77 x 76 x 52 mm
Weight	< 350 g
Power Consumption	< 7 W
Connectivity	1000BASE-TX ethernet / 1000BASE-T1 automotive ethernet

\*Other fields of view upon request possible

## Technology & Innovation



180° Field of View



Pure solid-state: No moving parts



Highly cost-effective



Low power consumption



Compact design



Class 1 laser product



High resolution



Harsh Environmental Protection: IP6K9K