

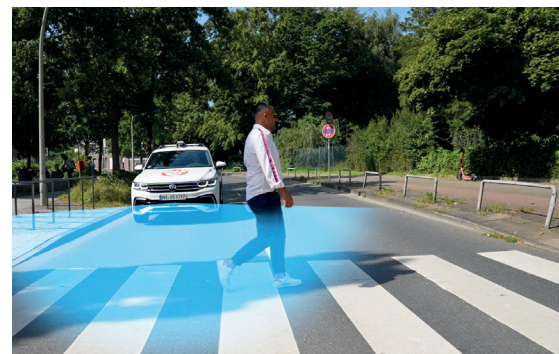
MOVIA™ S

Solid-state lidar performance in a cost-effective and compact design for the most demanding short-range applications



Key Features

- ▶ Highly cost-effective, scalable short-range solution
- ▶ Ideal for near-field applications like parking, blind spot detection, and low-speed autonomy
- ▶ Ultra-compact housing: seamless integration into design-critical components such as bumpers, fender
- ▶ Pure solid-state: no moving parts
- ▶ Selectable field of view: from 60° up to 180°
- ▶ Low-power consumption
- ▶ Optional onboard software
- ▶ Developed to automotive-grade standards

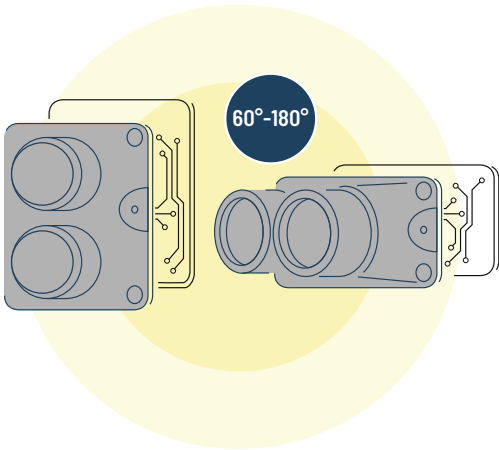


Safe mobility at the speed of life®

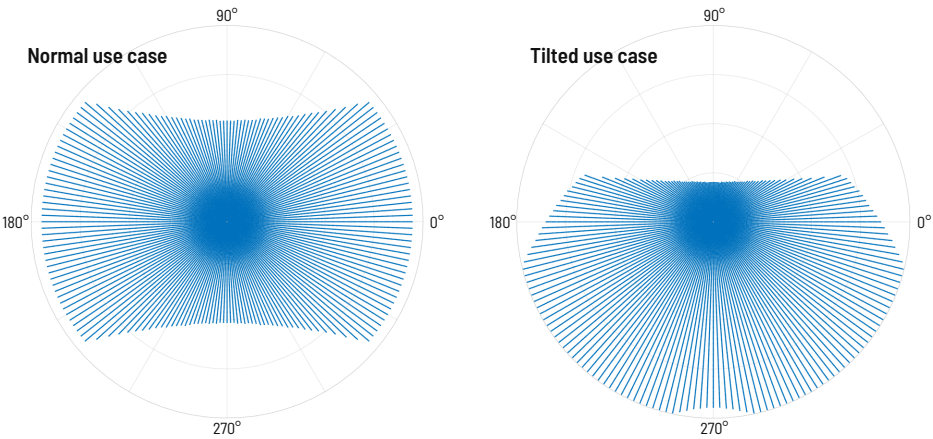


Field of View

MOVIA™ S features configurable optics - from 60° up to 180°. The wide field of view enables improvements for Level 2 and Level 3 driving, as well as advanced autonomous driving in urban scenarios.



Depending on the use case, MOVIA™ S allows to tilt the vertical field of view in the range of ±22° without changing the tilt of the sensor.



Technical Data

Technology / Laser / Optical	MOVIA™ S	
Field of view (h x v)	92.2° x 43°	180° x 135°
Angular resolution (h x v)	0.35° x 0.22°	0.70° x 0.70°
Frame rate	up to 20 Hz	up to 20 Hz

Technology & Innovation



Up to 180° Field of View



No moving parts



Highly cost-effective



Low power consumption



Compact design



Class 1 laser product



High resolution



Harsh Environmental Protection: IP6K9K